

Service description

| | | |
|-------------------|---|-----------|
| Product: SP200 | Service description no: 3112-S004 | Ver: 1 |
|-------------------|---|-----------|

Symptom

Replacement of impeller.

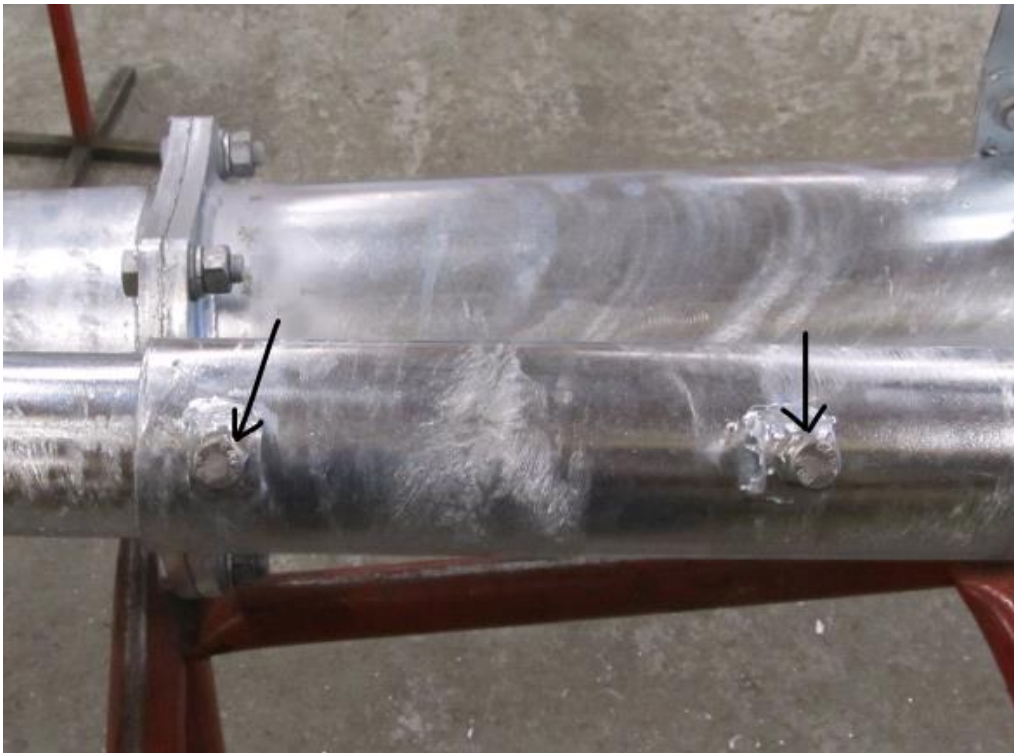
Caused by

The pump has been used a lot or something hard has deformed the impeller.

Solution

Replace the impeller with a new one.

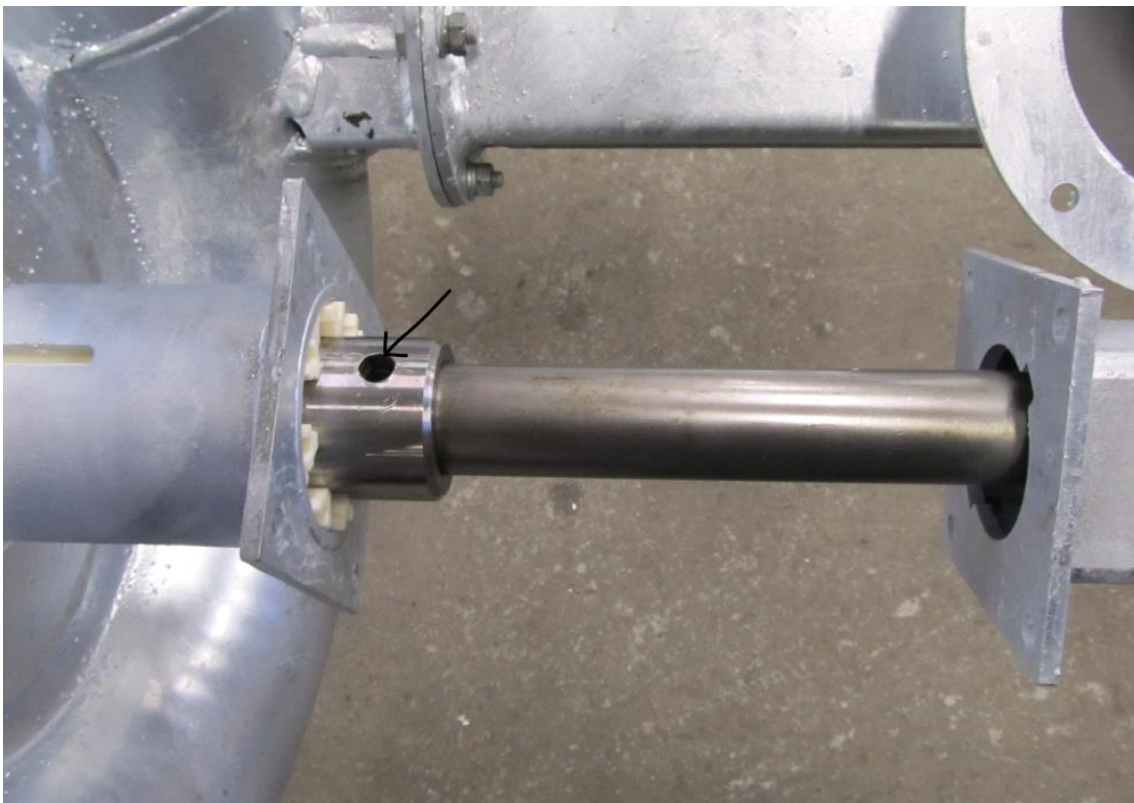
Loosen up two set screws on the telescopic cover tube to the drive shaft.



Release four screws that secure the cover tube to the pump housing.



Loosen the cover from the pump housing and push it up to expose the shaft. Push out the pin which secures the shaft to the impeller.



Remove the cutter from the pump housing and pull the impeller out of the pump housing.



Replace the impeller and assemble the pump by following the instructions in reverse order.